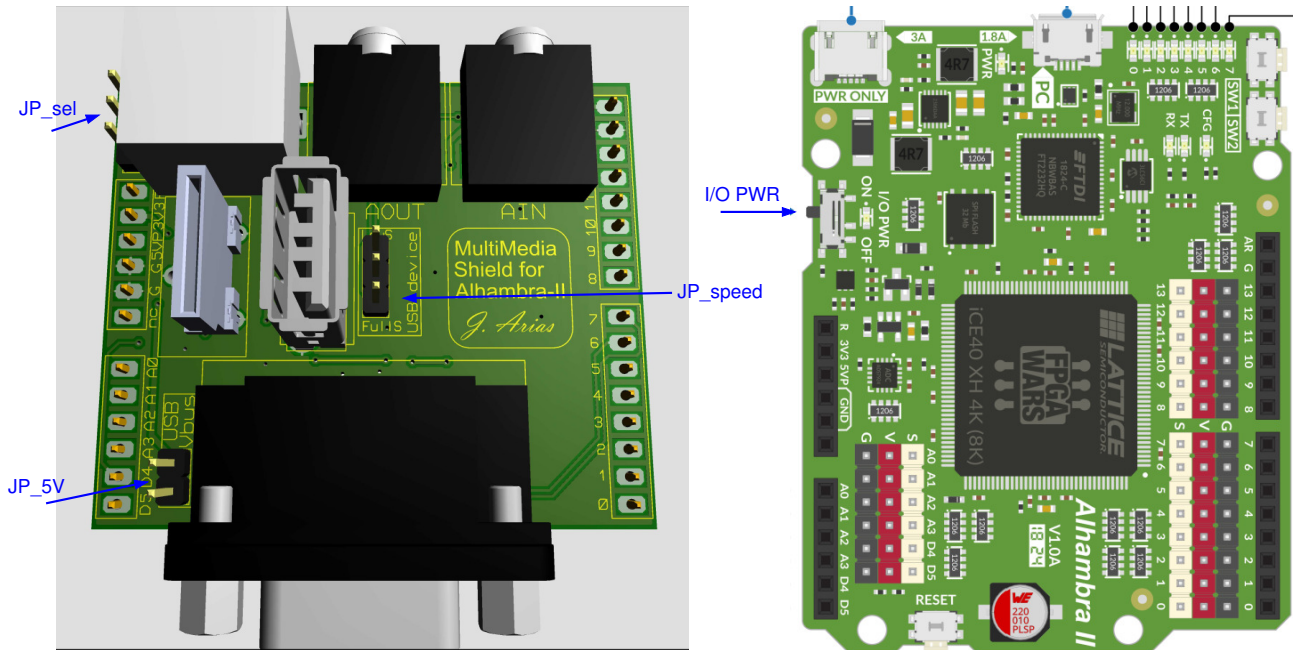


Jumper settings in the Alhambra-MM shield

Jumper locations:



Configuration table:

Interface in use	JP_sel	JP_5V	JP_speed	I/O PWR
PS2	PS2	x	none	ON
USB host	USB	ON	none	ON
USB device 1.5Mbit/s	USB	OFF	LowS	x
USB device 12Mbit/s	USB	OFF	FullS	x

Notes:

- Use short cables (less than 1 meter) for 12Mbit/s USBs, either device or host.
- The “I/O PWR” switch is located in the Alhambra-II board, not in the multimedia shield.